



## BO--V-701

### ALL STEEL BENCH VICE - FIXED BASE

- All Steel Body
- Hardened and Knurled Carbon Steel Jaws
- Chrome Plated Locking Screws
- With / Without Replaceable Jaws

INCH	SIZE MM	QTY./CTN. Pcs.	G.W. KGS.	VOLUME Cu.M.
3	75	6	29.6	.029
4	100	4	22.8	.025
5	125	2	21.1	.022
6	150	1	13.4	.010
8	200	1	15.4	.019

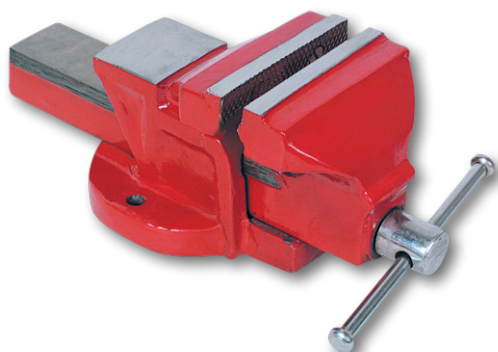


## BO--V-702

### ALL STEEL BENCH VICE - SWIVEL BASE

- All Steel Body
- Hardened and Knurled Carbon Steel Jaws
- Chrome Plated Locking Screws
- With / Without Replaceable Jaws

INCH	SIZE NO.	MM	QTY./CTN. Pcs.	G.W. KGS.	VOLUME Cu.M.
3	1	75	6	32.8	.035
4	3	100	4	25.0	.030
5	5	125	2	24.4	.025
6	6	150	1	14.4	.014
8	8	200	1	17.4	.021

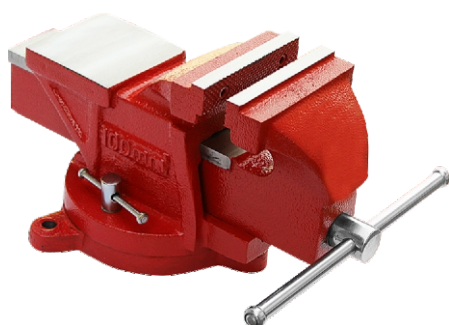


## BO--V-703

### CAST IRON BENCH VICE - FIXED BASE

- Cast Iron Body
- Polished Jaws

INCH	SIZE NO.	MM	QTY./CTN. Pcs.	G.W. KGS.	VOLUME Cu.M.
3	1	75	4	25.4	.028
4	3	100	2	22.8	.026
5	5	125	1	15.9	.016
6	6	150	1	22.2	.019
8	6	200	1	31.8	.027

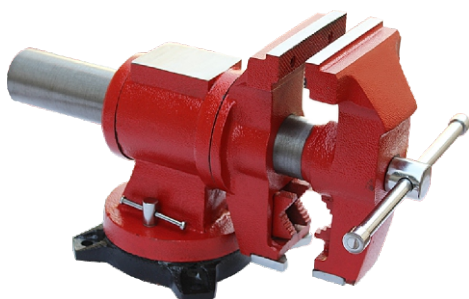


## BO--V-704

### CAST IRON BENCH VICE - SWIVEL BASE

- Cast Iron Body
- Polished Jaws

INCH	SIZE NO.	MM	QTY./CTN. Pcs.	G.W. KGS.	VOLUME Cu.M.
3	1	75	2	15.2	.020
4	3	100	1	14.2	.014
5	5	125	1	18.1	.022
6	6	150	1	22.4	.026
8	8	200	1	36.2	.039

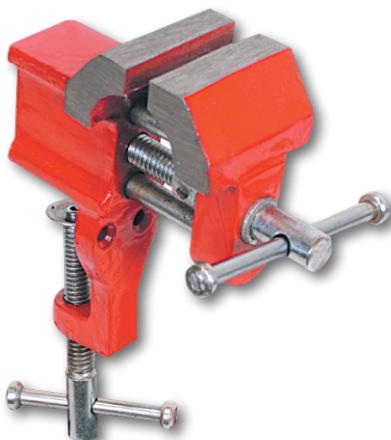


**BO-V-705**

**MULTIPURPOSE VICE**

- Body Made from Cast Steel
- Solid Steel Anvil
- Swivel Base upto 360°

INCH	SIZE MM	QTY./CTN. Pcs.	G.W. KGS.	VOLUME Cu.M.
4	100	1	18.5	.023
5	125	1	20.00	.024
6	150	1	27.00	.027

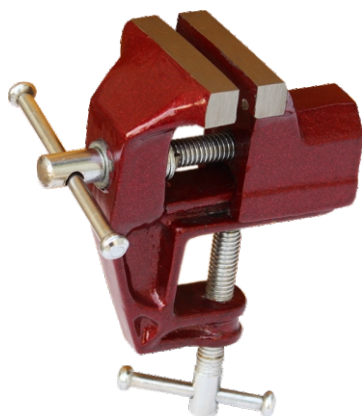


**BO-V-706**

**BABY VICE - FIXED BASE**

- Cast Iron Body
- Polished Jaw

INCH	SIZE MM	QTY./CTN. Pcs.	G.W. KGS.	VOLUME Cu.M.
1	25	24	15.00	.020
1.1/2	37	24	17.50	.024
2	50	20	19.00	.028



**BO-V-707**

**BABY VICE CLAMP - FIXED BASE**

- Cast Iron Body
- Polished Jaw

INCH	SIZE MM	QTY./CTN. Pcs.	G.W. KGS.	VOLUME Cu.M.
1	25	24	15.00	.020
1.1/2	37	24	17.50	.024
2	50	20	19.00	.028
2.1/2	65	20	22.5	.033
3	75	16	24.4	.038

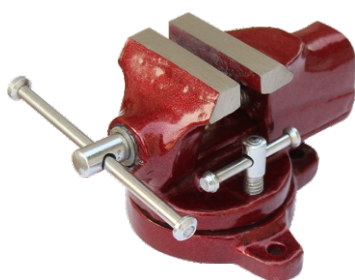


BO-V-708

### BABY VICE SWIVEL BASE - SLIDE TYPE

- Cast Iron Body
- Polished Jaw
- Clamp for firm grip

INCH	SIZE		QTY./CTN. Pcs.	G.W. KGS.	VOLUME Cu.M.
	MM				
1.1/2	37		24	29.2	.040
2	50		20	24.8	.037
2.1/2	63		20	21.8	0.37
3	75		16	27.8	.038

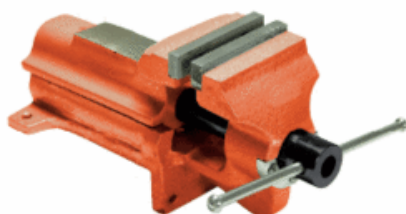


BO-V-709

### CLAMP BABY VICE SWIVEL BASE BENCH MODEL

- Graded Cast Iron Body
- Polished Jaws

INCH	SIZE		QTY./CTN. Pcs.	G.W. KGS.	VOLUME Cu.M.
	MM				
2	50		16	13.6	.020
3	75		12	11.3	.018



BO-V-710

### CYLINDERICAL VICE

- Cast Iron Body
- Polished Jaws

INCH	SIZE		QTY./CTN. Pcs.	G.W. KGS.	VOLUME Cu.M.
	MM				
3	75		2	16.6	.023
4	100		2	21.7	.026



BO-611

### ANVIL

- Cast Iron Body
- Polished Surface

SIZE KG	QTY./CTN. Pcs.	G.W. Pcs.	VOLUME
5	4	22.00	
10	2	22.00	
20	1	22.00	
50	1	52.00	
100	1	104.00	